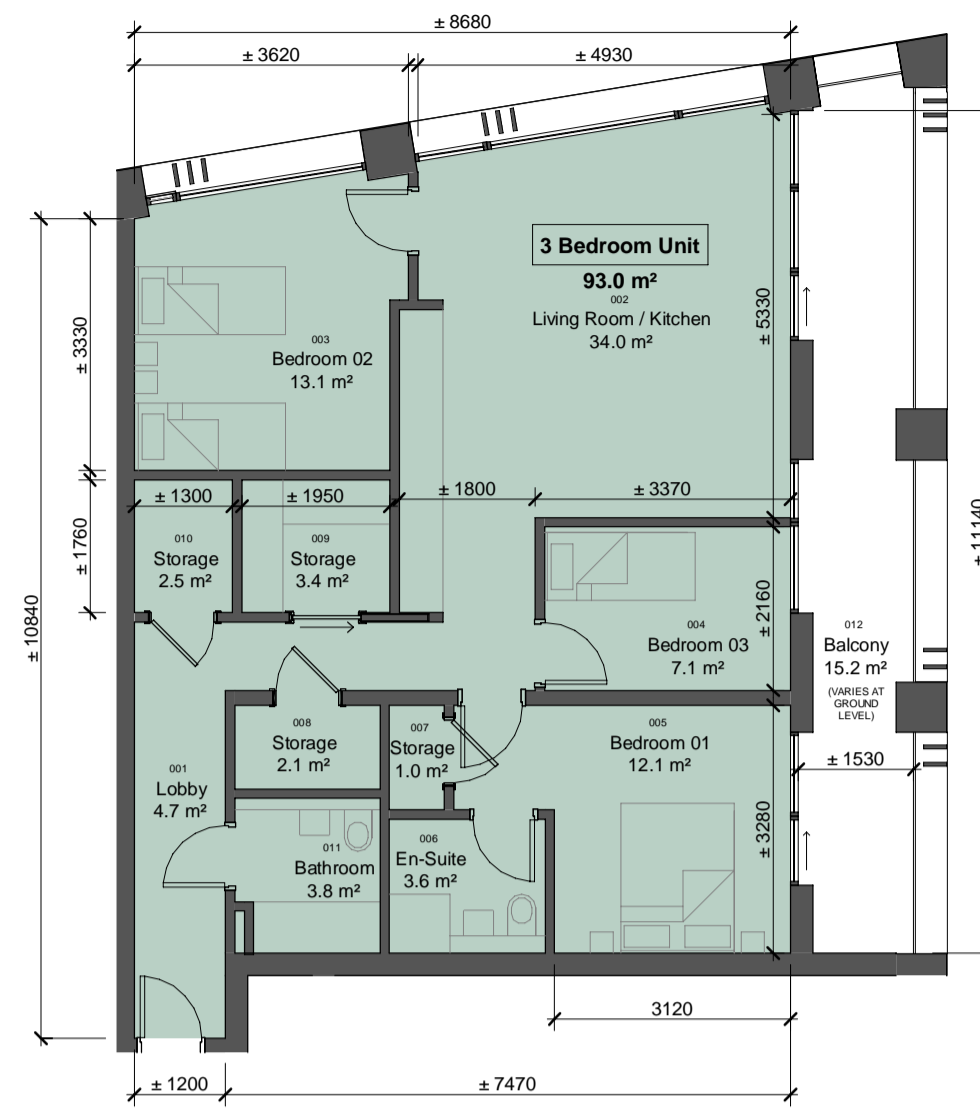


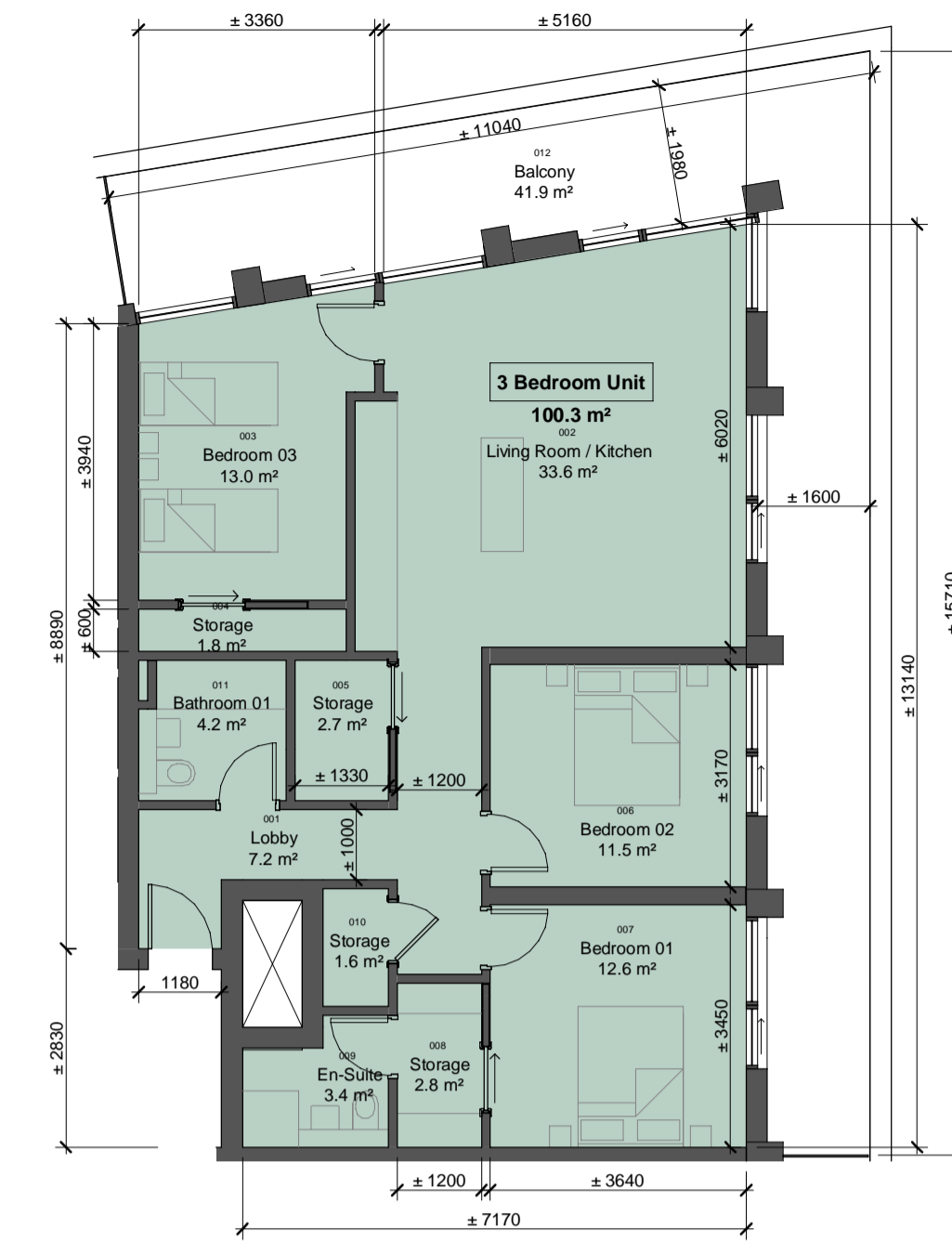
Unit Type 2BR-M-1		
No.	Name	Area
001	Lobby	4.8 m ²
002	Living Room / Kitchen	30.4 m ²
003	Storage	3.5 m ²
004	Bedroom 02	13.0 m ²
005	Bedroom 01	11.4 m ²
006	Storage	2.3 m ²
007	En-suite	3.8 m ²
008	Storage	1.4 m ²
009	Bathroom 01	3.9 m ²
Net Internal Area:		74.4 m ²
Gross Internal Area:		80 m ²

1 Unit Type 2BR-M-1
scale 1 : 100



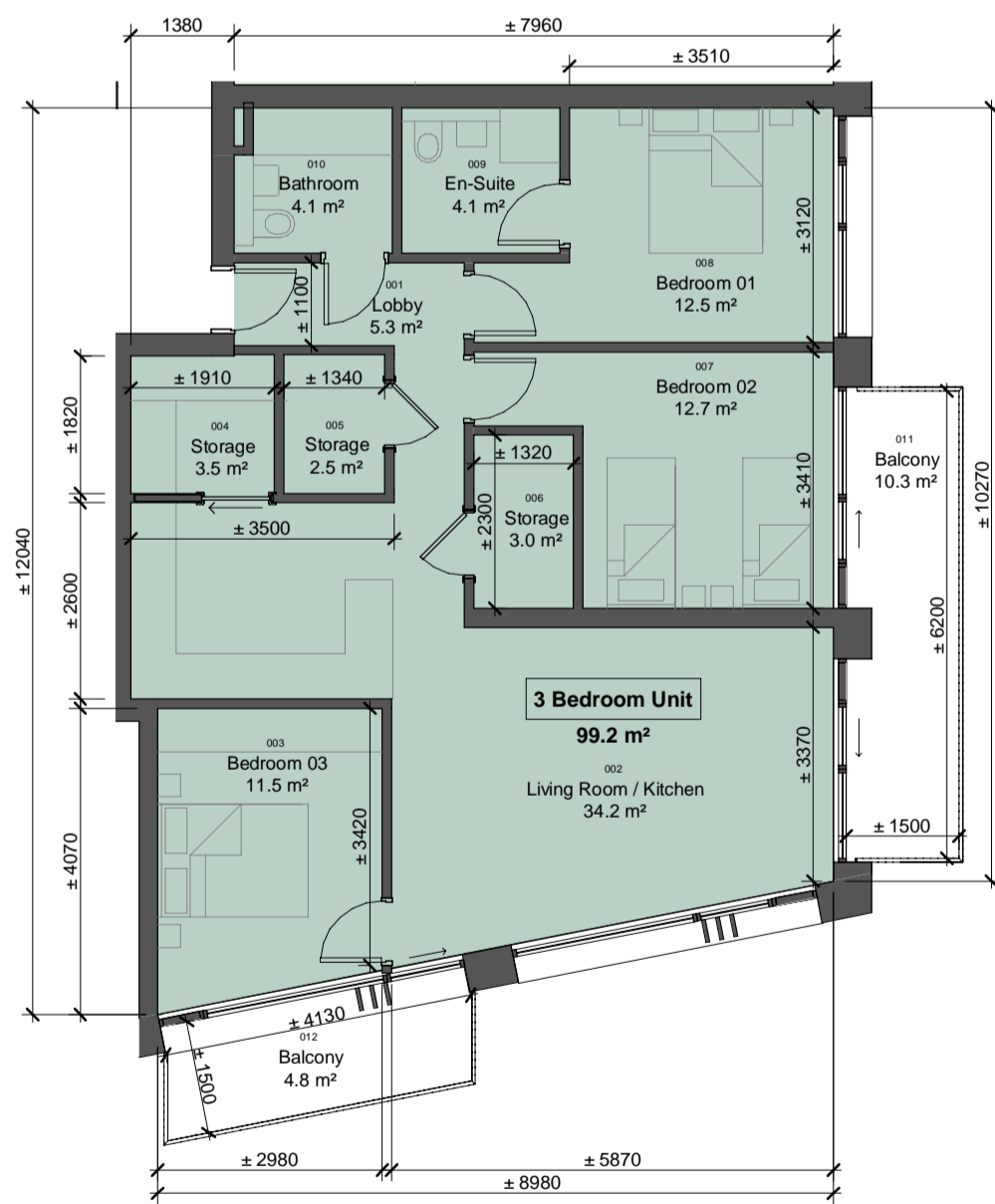
Unit Type 3BR-A-1		
No.	Name	Area
001	Lobby	4.7 m ²
002	Living Room / Kitchen	34.0 m ²
003	Bedroom 02	13.1 m ²
004	Bedroom 03	7.1 m ²
005	Bedroom 01	12.1 m ²
006	En-Suite	3.6 m ²
007	Storage	1.0 m ²
008	Storage	2.1 m ²
009	Storage	3.4 m ²
010	Storage	2.5 m ²
011	Bathroom	3.8 m ²
Net Internal Area:		87.4 m ²
Gross Internal Area:		93 m ²

2 Unit Type 3BR-A-1
scale 1 : 100



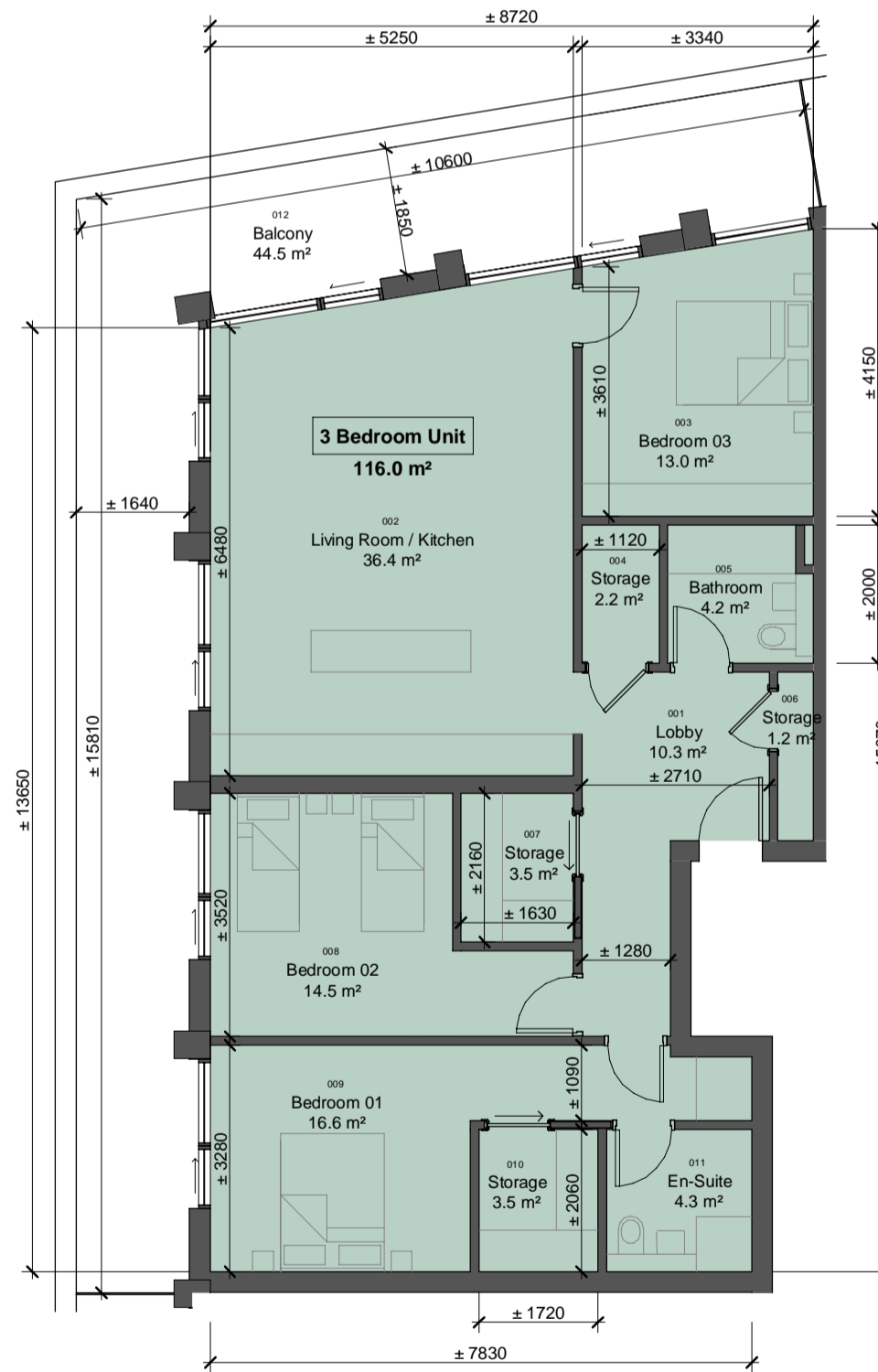
Unit Type 3BR-A-2		
No.	Name	Area
001	Lobby	7.2 m ²
002	Living Room / Kitchen	33.6 m ²
003	Bedroom 03	13.0 m ²
004	Storage	1.8 m ²
005	Storage	2.7 m ²
006	Bedroom 02	11.5 m ²
007	Bedroom 01	12.6 m ²
008	Storage	2.8 m ²
009	En-Suite	3.4 m ²
010	Storage	1.6 m ²
011	Bathroom 01	4.2 m ²
Net Internal Area:		94.3 m ²
Gross Internal Area:		100.3 m ²

3 Unit Type 3BR-A-2
scale 1 : 100



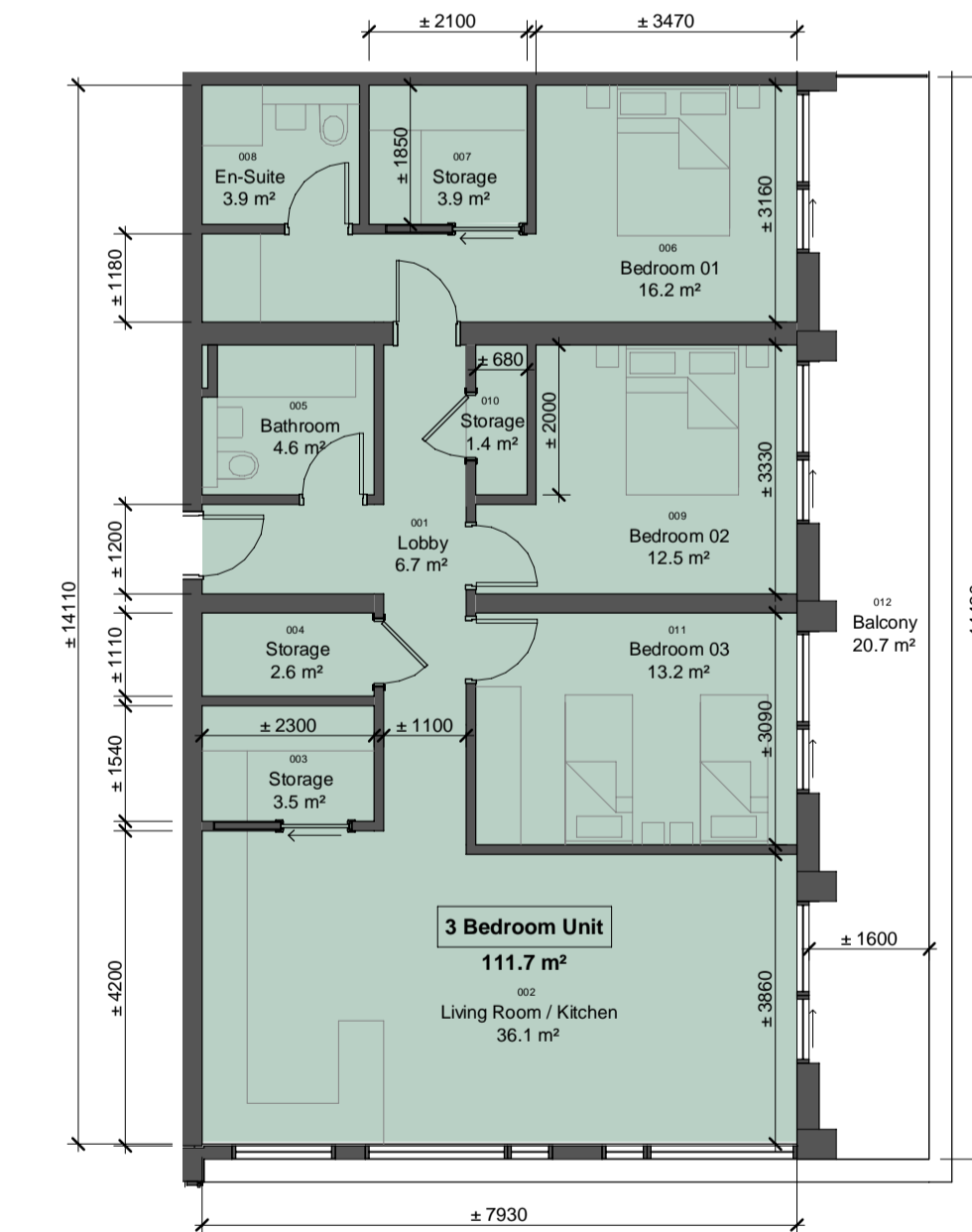
Unit Type 3BR-B-1		
No.	Name	Area
001	Lobby	5.3 m ²
002	Living Room / Kitchen	34.2 m ²
003	Bedroom 03	11.5 m ²
004	Storage	3.5 m ²
005	Storage	2.5 m ²
006	Storage	3.0 m ²
007	Bedroom 02	12.7 m ²
008	Bedroom 01	12.5 m ²
009	En-Suite	4.1 m ²
010	Bathroom	4.1 m ²
Net Internal Area:		93.3 m ²
Gross Internal Area:		99.2 m ²

4 Unit Type 3BR-B-1
scale 1 : 100



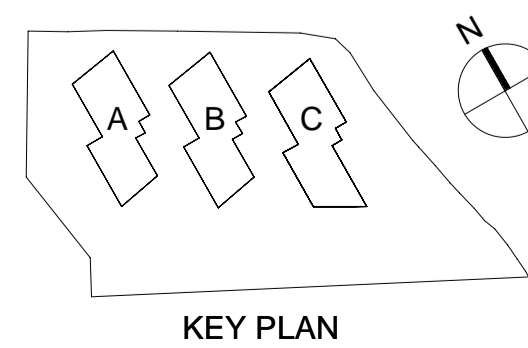
Unit Type 3BR-C-1		
No.	Name	Area
001	Lobby	10.3 m ²
002	Living Room / Kitchen	36.4 m ²
003	Bedroom 03	13.0 m ²
004	Storage	2.2 m ²
005	Bathroom	4.2 m ²
006	Storage	1.2 m ²
007	Storage	3.5 m ²
008	Bedroom 02	14.5 m ²
009	Bedroom 01	16.6 m ²
010	Storage	3.5 m ²
011	En-Suite	4.3 m ²
Net Internal Area:		109.9 m ²
Gross Internal Area:		116 m ²

5 Unit Type 3BR-C-1
scale 1 : 100



Unit Type 3BR-D-1		
No.	Name	Area
001	Lobby	6.7 m ²
002	Living Room / Kitchen	36.1 m ²
003	Storage	3.5 m ²
004	Storage	2.6 m ²
005	Bathroom	4.6 m ²
006	Bedroom 01	16.2 m ²
007	Storage	3.9 m ²
008	En-Suite	3.9 m ²
009	Bedroom 02	12.5 m ²
010	Storage	1.4 m ²
011	Bedroom 03	13.2 m ²
Net Internal Area:		104.6 m ²
Gross Internal Area:		111.7 m ²

6 Unit Type 3BR-D-1
scale 1 : 100



Rev	Date	Description	Dm	Chkd
P01	21-09-2020	Draft Pre-Application Consultation Issue	GV	GM
P02	19-10-2020	Issued for Pre-Application Consultation	GV	GM
P03	26-05-2021	Issued for Planning Application	GV	GM

Architecture • Interior Design • Masterplanning • Project Management

MCA ARCHITECTS

4 Harrower Wharf,
Asgard Road,
Dublin 2, Ireland.
+353 1 6760916
info@mca.ie
www.mca.ie

Client:	GLL PRS Holdco Limited	Job No:	2019.19
Project:	'KENELM' SHD, DEER PARK, HOWTH	Sheet:	A1
Drawing:	Unit Types Sheet 4 of 4	Scale:	1 : 100
Stage:	PLANNING	Status Code:	S4
Status:	FOR STAGE APPROVAL	Drawing Number:	HOW-MCA-00-XX-DR-A-1133

Check all dimensions on site. Do not rely on scaled dimensions. This drawing must be read in conjunction with all relevant contract documents.

This drawing is the property of Michael Collins Associates Ltd. (trading as MCA Architects). The drawing shall not be copied, reproduced or otherwise used without the consent of Michael Collins Associates Ltd.

REVISION